



Construction & Operation

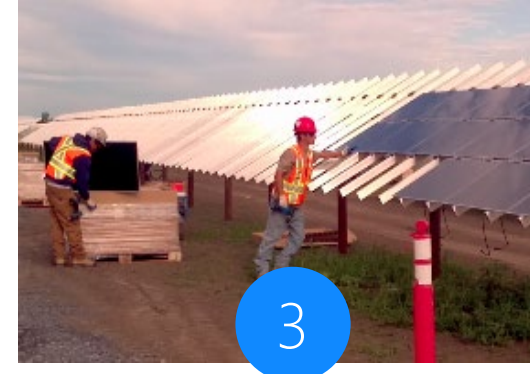
Solar Project Construction



1
Piles installed



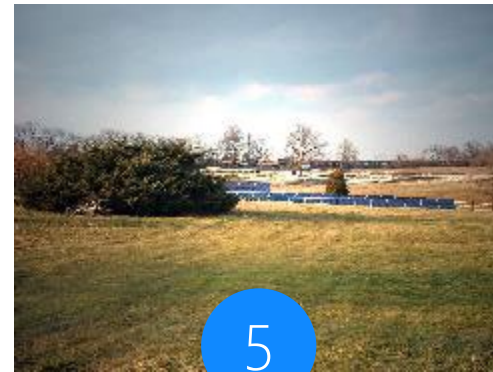
2
Racking mounted on piles



3
Panels installed on racking



4
Inverter/transformer skid



5
Street view of project



6
Land is revegetated

Blackford County Screening Ordinance

→ Foliage will be 6-10 ft high within 2 years of initial planting

→ Planted at intervals of less than 10 ft

→ Planted along frontage sides & sides where there is a house or public road within 500 ft



Construction Best Practices

Crop Damage

- All field activity is tracked by GPS
- Leases reimbursed for any crop loss or damage as a result of development/construction activity for the project

Drainage Preservation

- Private drain tile maps are on file (KMZ)
- Received County Drainage Board approval for any areas impacted

Road Use Agreement

- EDF has an approved road use agreement with Blackford County

Agricultural Soil Reclamation Plan

- EDF has agreed to a form of agricultural soil reclamation plan which will be finalized with Blackford County as part of the issuance of the Improvement Location Permit

Crop Damage

- All field activity is tracked by GPS
- Leases reimburse for any crop loss or damage as a result of development/construction activity for the project

Drainage Restoration

- Drain tile breaks from field activity or construction are repaired for individuals and county drainage systems (per the drainage board approval)
- Private tile maps are on file



After Construction
– Back to Farming

Operation and Maintenance Building and Permanent Meteorological Stations



An operation and maintenance (O&M) building will be built or rented to allow operators to maintain the panels and keep spare parts.



Meteorological (MET) stations roughly 10 feet tall will be placed within the project layout for solar resource assessment. They measure irradiance, soiling, albedo, PV module temperatures, and collect additional meteorological data such as wind speed, wind direction, precipitation, air temperature, and relative humidity. (approximately 6-8 METs)

Operations & Maintenance

EDF Renewables is one of the largest providers of third-party operations and maintenance services in North America. Our asset optimization team ensures ongoing profitability for project owners and investors by providing a range of expertise, from asset management to spare procurement.

Our experienced team of full-time technicians, supervisors, and support staff means that EDF Renewables is fully equipped to manage the balance of plant and day to day operations of your project.



 On site prevention and corrective maintenance

 Major component repair / replacement

 Balance of plant management

 Engineering support



Decommissioning & Reclamation

The project is expected to be operational for 30 years or longer.

At the end of the project's life, we will evaluate whether the project should be decommissioned or repowered.

Decommissioning

- EDF has an approved decommissioning agreement with Blackford County
- The project is de-energized. All above-ground infrastructure is removed, and the land is restored to its original or equivalent land use.
- Construction equipment will be utilized to remove infrastructure.
- A decommissioning fund along with the salvage value of the equipment will cover the decommissioning and reclamation costs providing peace of mind for landowners and local government.

Repowering

- Solar Panels and/or other infrastructure is upgraded to extend the project's life.
- 90% of panel components are recyclable or salvageable. Waste and debris generated during decommissioning activities will be collected and disposed at an approved facility.