
Local Community Benefits

Many Layers of Economic Impacts



LEASE PAYMENTS

- Annual \geq \$1.1MM
- 2.5 % Annual Escalator
- \$65MM Paid to Landowners by year 35



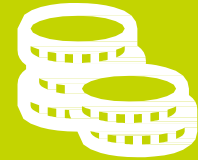
ANNUAL PROPERTY TAX REVENUE

- \$1.20 per MWh – project estimate:
 - \$400-450k County
 - \$100-125k Township




JOBS

350+ temporary construction & installation jobs, boost local spending



ADDITIONAL IMPACTS FROM SOLAR

Subcontractor, equipment, local utilities



Solar Energy and Agriculture

Grazing and electricity production can result in two revenue streams while sharing the same piece of land.

- Adding grazing is efficient and economically advantageous to the local community
- Sheep & vegetative management
- Flowering vegetation = food for bees and butterflies, birds
- EDF Renewables has successfully partnered with local farmers & apiarists.